



Jamison Catchment Streets to Creeks Program

**Geoffrey Smith/Eric Mahony
Blue Mountains City Council**



Wentworth Falls Lake (headwaters of Jamison Creek)





Biodiversity Hotspot

**Plethora of Threatened
Species and
Endangered Ecological
Communities**

**(BM Water Skink, Giant
Dragonfly, Dwarf
Mountain Pine,
Ecalyptus Copulans)**



Urban runoff carrying pollutants primary threat



**7th July 2012: over 1000 dead & dying crayfish (*Euastacus spinifer*)
found along Jamison Creek**

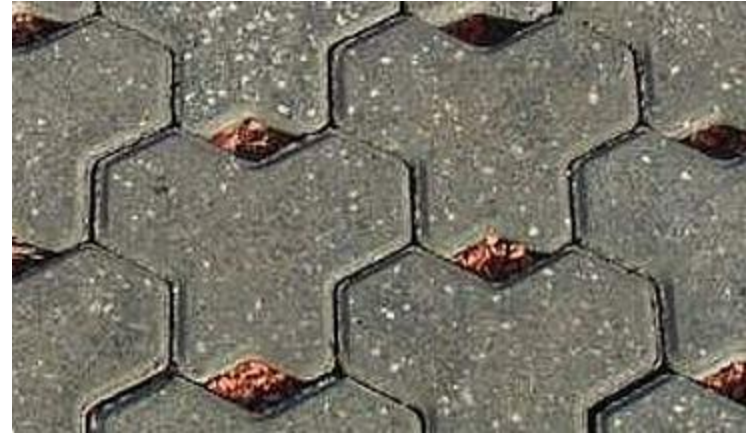


Point Source Found

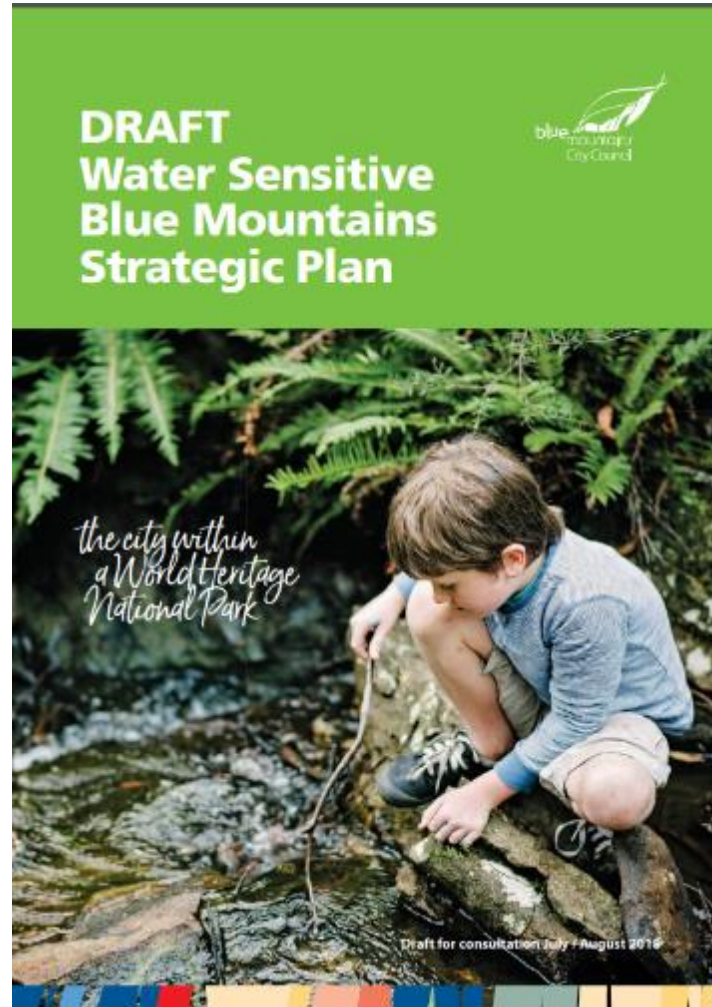
Pesticides in detention basin



**In a water sensitive catchment, the pesticide
may never have reached the creek**



Water Sensitive Blue Mountains Strategic Plan (adopted 2019)



On-ground works in Jamison Catchment WWF 2018-19



Construction of 2 new Baramy GPTs



Canberra St Baramy GPT



Canberra St raingardens

Stormwater treated in multiple cells



Canberra St plants established



Banksia Street



Banksia Street



David Street (new Baramy & raingarden)



David Street in flow



Sediment captured in Baramy GPT above WWF Lake



Pitt Park raingardens



WWF Cemetery



Wilson Park (site where bifenthrin entered Jamison Creek)



Community Planting at Wilson Park raingarden



Central Park WWF



Getting levels right critical



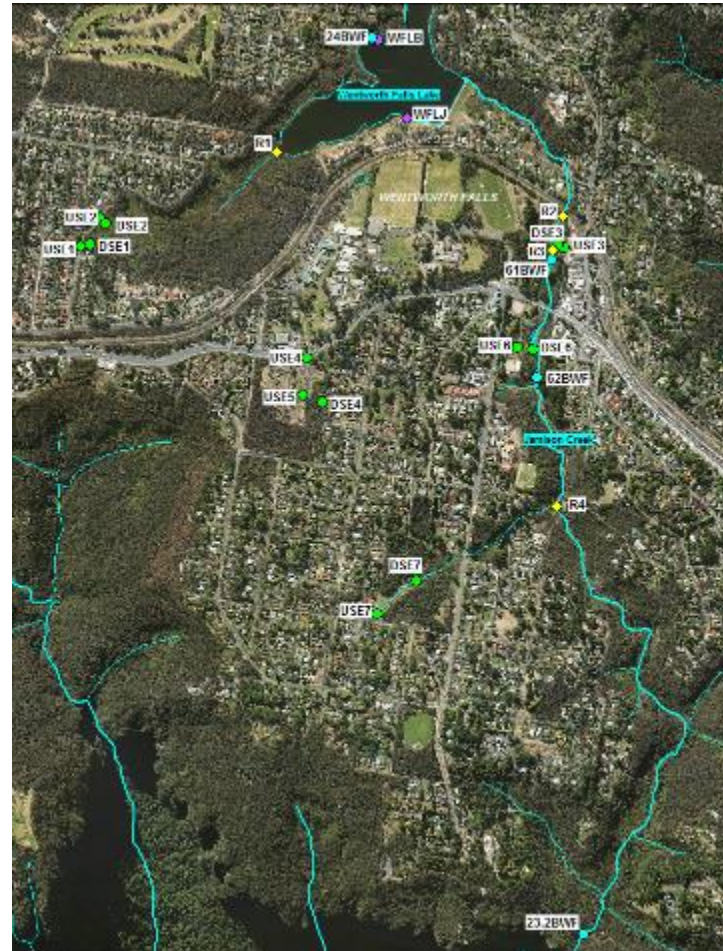
3 Raingarden Cells



Central Park raingardens in flow



Jamison Monitoring Program



WaterNSW auto sampler



Aquatic Monitoring Team (inflows and outflows)



Preliminary Results

- 55% - 95% Reduction in suspended solids
- 35% - 80% Reduction in Total phosphorus
- 20% - 60% Reduction in total nitrogen
- 50% - 90% reduction in faecal coliforms

Rob McCormack crayfish survey Jamison Creek Nov 2018



First 'berried' (egg carrying) crays returning



Community Engagement – Jamison Creek Catchment Community Group



Cardinya St stormwater structures
Photo: Ian Brown

What can we all do to help the catchment?

- Control weeds on your property
- Stop pollutants such as sediment, litter, oil, fertilisers and pesticides from contaminating stormwater
- Minimise the amount of impervious surface on your property
- Install a rainwater tank and use the water captured on your property
- Join a Bushcare, Landcare or Swamp Care group

Join a Bushcare Group

There are four community volunteer Bushcare/Landcare groups in the catchment.

Wentworth Falls Lake Bushcare
3rd Saturday of the Month

Charles Darwin Bushcare
3rd Saturday of the Month

Jamieson Street Landcare
1st Saturday of the Month

Central Park Bushcare
4th Thursday of the Month

Join The Bush Backyards Network

For support to care for your own bushland, phone 4780 5000 or email lthomas@bmcc.nsw.gov.au



Jamison Creek
Catchment
Cooperating Group



Local Land
Services
Greater Sydney



National Landcare
Programme

This publication is supported by Greater Sydney Local Land Services through funding from the Australian Government's National Landcare Programme.

Working together to protect and restore the Jamison Creek Catchment



Photo: 777



Jamison Creek
Catchment
Cooperating Group

New Boardwalk and viewing platform (2018-19)



New toilet block with BM water skink and giant dragonfly design elements 2018-19



New interpretive signage reflecting an Aboriginal perspective of WWF Lake



‘Connecting Communities & Kids with Creeks & Catchments’ BioBlitz’s and Catchment crawls



Bioblitz at WWF Lake



Waterways Festival



Ricky Spencer 'turtle man'



New turtle fans



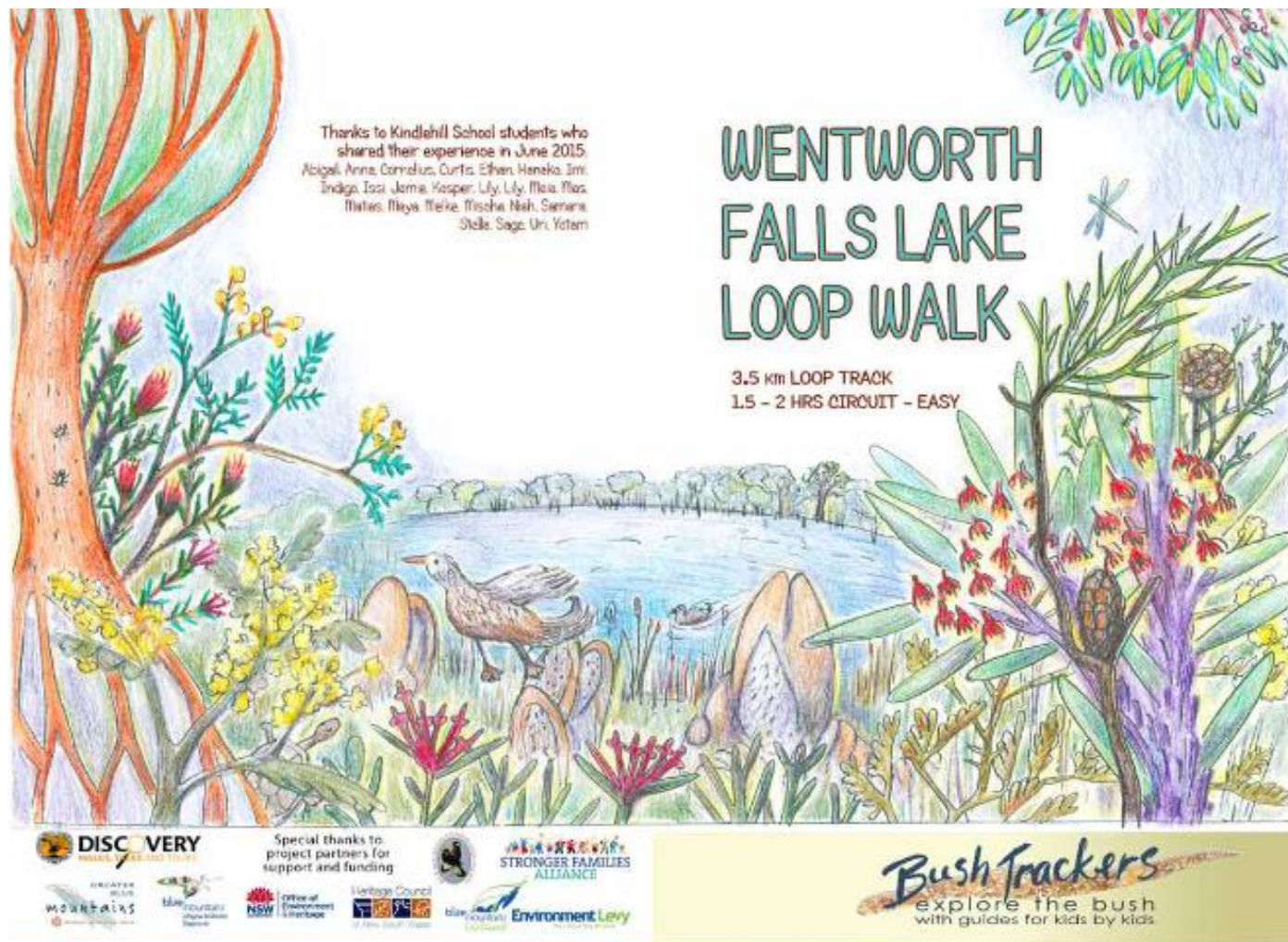
Rob McCormack 'crayfish man'



David King 'Gundungarra man'



Bushtrackers Map for kids by kids



3 schools adopted focal species
Giant Dragonfly (Kindle Hill PS), BM Water Skink (WWF PS),
Long Neck Turtle (BM Grammar)



BM Waterways 2019



Local students stretch a message around their school.

waterways
Health Snapshot

2019

Your rates at work:
fostering water sensitive people

In schools
Through our Connecting Kids to Creeks Program we are inspiring the next generation to look after our waterways. Over 600 students, aged 3-17 years from local schools are involved in the program each year. By learning about our waterways, doing hands-on water science and taking practical action, these students are learning to be our waterway guardians of the future.
To find out about our schools program visit:
www.bmcc.nsw.gov.au/schools-program

In our community
We support over 500 conservation volunteers at 130 sites across the city—with advice, tools and training. Come along and make a practical difference to your local creeks and bushland!
Visit: www.bmcc.nsw.gov.au/envirovolunteers

More ways to help

Report pollution
NSW Environment Line 131 555

Report sewage leaks
Sydney Water 13 20 90

Dispose of chemicals safely
Household Chemical Cleanout:
www.bmcc.nsw.gov.au/cleanout

Become a volunteer
www.bmcc.nsw.gov.au/envirovolunteers

healthy waterways

blue mountains City Council

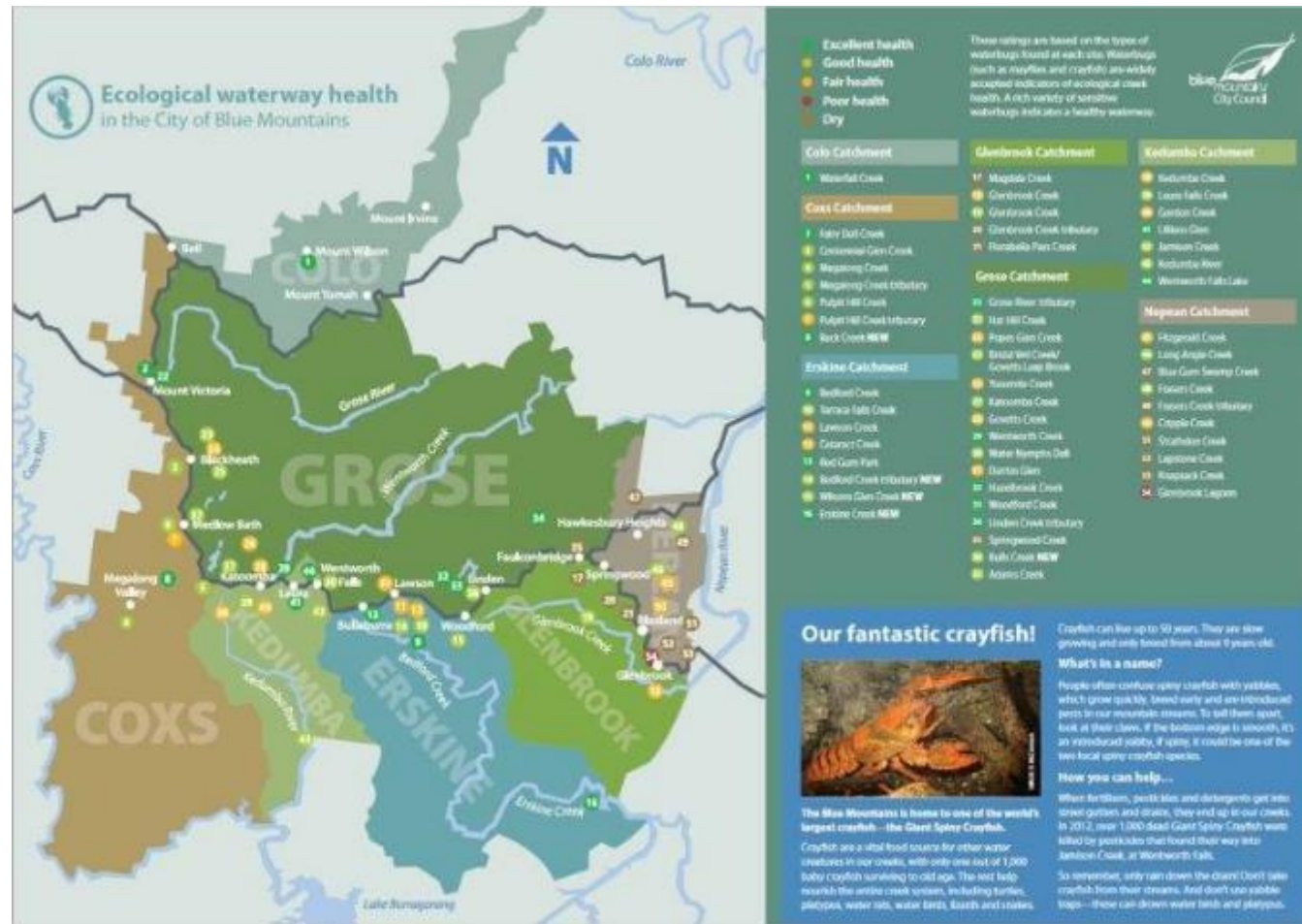
www.bmcc.nsw.gov.au

PRINTED ON 100% RECYCLED PAPER
CARBON NEUTRAL PRINTING

Locked Bag 1005,
2 Creek Place
Katoomba NSW 2780
T 02 43780 5000
E council@bmcc.nsw.gov.au

the city within
a World Heritage
National Park

Special feature on crayfish



Thankyou & QUESTIONS?

